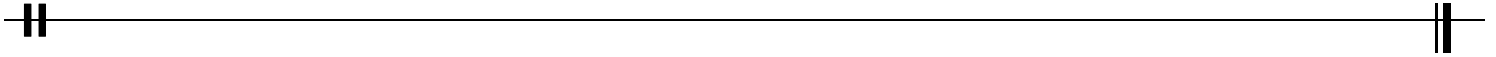


How Music Works

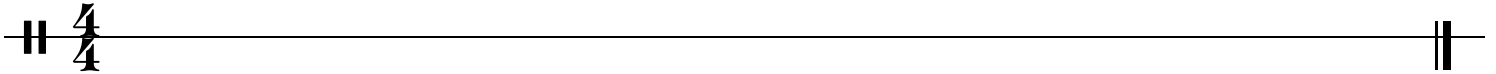
Tablature Format

This is a measure (often call a 'bar'). It holds the music notes and helps to mark their value.

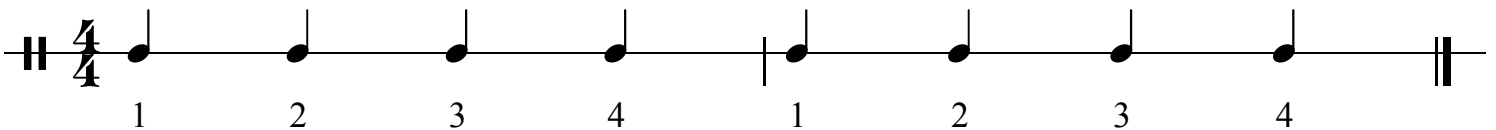


This is a Time Signature.

It shows how many Beats are in a Measure and what type of note gets one Beat.

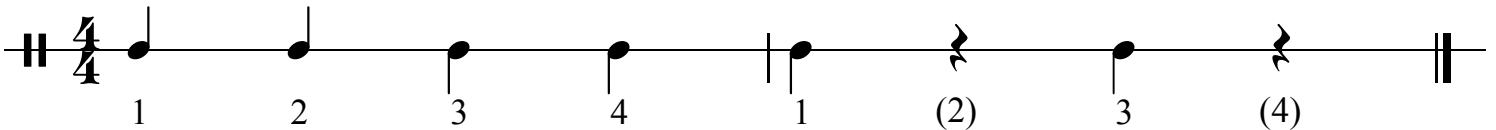


The time signature '4/4' shows that there are four beats in each measure and a Quarter Note gets one beat.

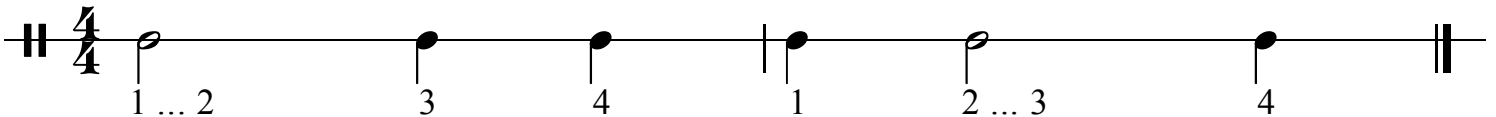


The 'Tails' of the notes can go up or down.

A note can be replaced by an equivalent Rest.

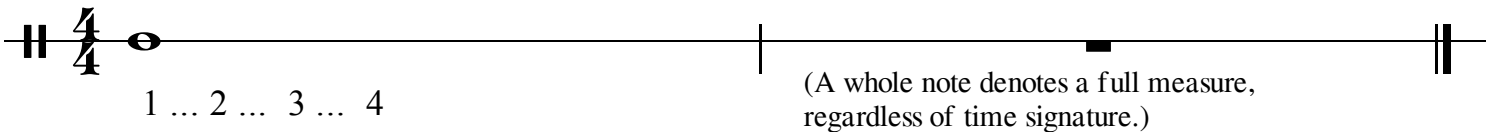


If we want to hold a note longer, we can use a 'bigger' note, in this case a Half Note (made up of 2 quarters, of course).



A Whole Note accounts for 4 quarter notes or beats.

There's also a Whole Note Rest.



And a Half Note rest.

